



MONTHLY MEMBERSHIP PROGRESS REPORT

District 315B1

Results as of: 5/31/2017

GMT: NAZMUL HAQUE

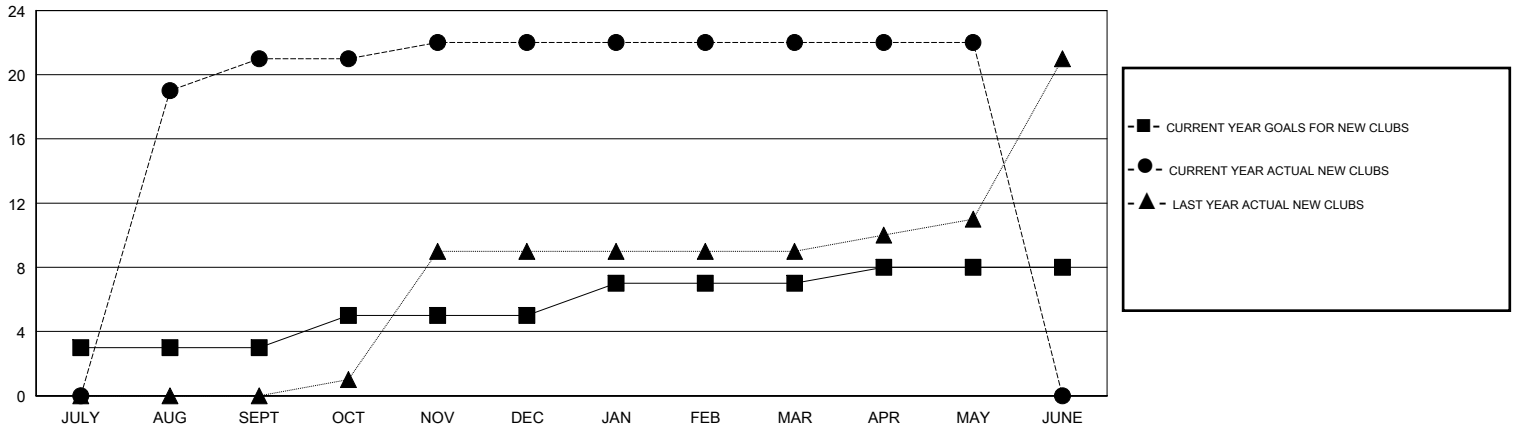
LOCATION REP OF BANGLADESH

GMT CA

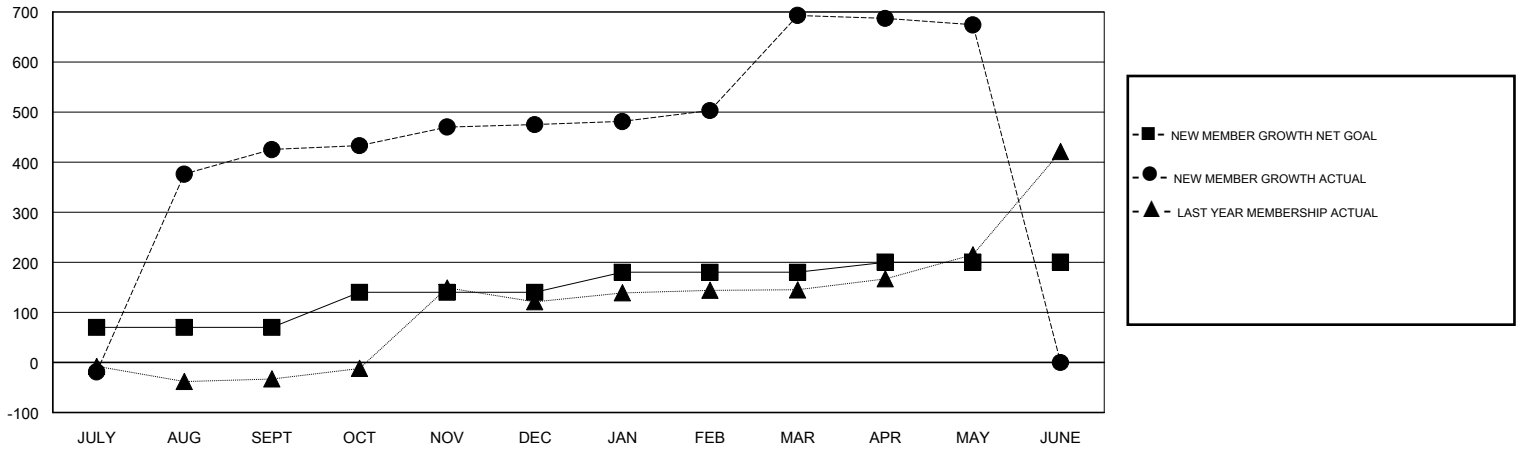
Clubs			
RESULTS FOR 2016-2017			
QUARTER	NEW CLUB GOAL	NEW CLUBS	DROPPED CLUBS
JULY/AUG/SEPT	3	21	0
OCT/NOV/DEC	2	1	0
JAN/FEB/MAR	2	0	0
APR/MAY/JUNE	1	0	0

Members			
RESULTS FOR 2016-2017			
QUARTER	NEW MEMBER GROWTH NET GOAL (not reinstated or transfers)	NEW MEMBER GROWTH ACTUAL (not reinstated or transfers)	DROPPED MEMBERS ACTUAL (including transfers)
JULY/AUG/SEPT	70	469	44
OCT/NOV/DEC	70	72	22
JAN/FEB/MAR	40	226	8
APR/MAY/JUNE	20	10	29

GOALS AND ACTUAL NEW CLUBS CUMULATIVE



GOALS AND ACTUAL MEMBERS CUMULATIVE



DROPPED CLUBS: 0	66 CLUBS OF 133 ADDED 1 OR MORE NEW MEMBERS	<u>GENDER DISTRIBUTION</u>	
DROPPED MEMBERS		MALE	2,477 (80.53%)
DECEASED	0	FEMALE	599 (19.47%)
CLUB CANCELLED	0	TOTAL FAMILY UNIT MEMBERS	1,426
OTHER	103	CLICK HERE FOR CUMULATIVE MEMBERSHIP DATA	
TOTAL	103	FAMILY MEMBERS PAYING HALF DUES	1,048